

TACO Marine® Grand Slam Outrigger Mounts

Clamp-On Center Rigger

INSTALLATION INSTRUCTION GUIDE



Kit Contents

1

Center rigger mount

1

3/4" vinyl insert

1

1" vinyl insert

Required*

*not included

- ELECTRIC DRILL
- 1/4" DRILL BIT
- MARINE-GRADE GREASE
- LIGHT MACHINE OIL
- 3/6" ALLEN WRENCH/BIT
- TORQUE WRENCH



WARNING:

This product can expose you to chemicals including Lead, which is known to the State of California to cause cancer, birth defects or other reproductive harm. For more information go to www.P65Warnings.ca.gov.

INSTALLATION

MARKING THE LOCATION

1. Unbolt the assembled mount after removing it from its package.
2. Install your center rigger pole into the unit
3. Have someone help you position the lower cap mount, with the ANTI-ROTATION PIN, to the exact location you want the angle of your center rigger pole for fishing.
4. After finding the location you want to mount the center rigger pole, mark the point of contact of the ANTI-ROTATION PIN, in the lower cap (see drawing below), on the t-top tube/tower pipe with a permanent marker.
5. Remove the center rigger from the t-top tube/tower pipe.

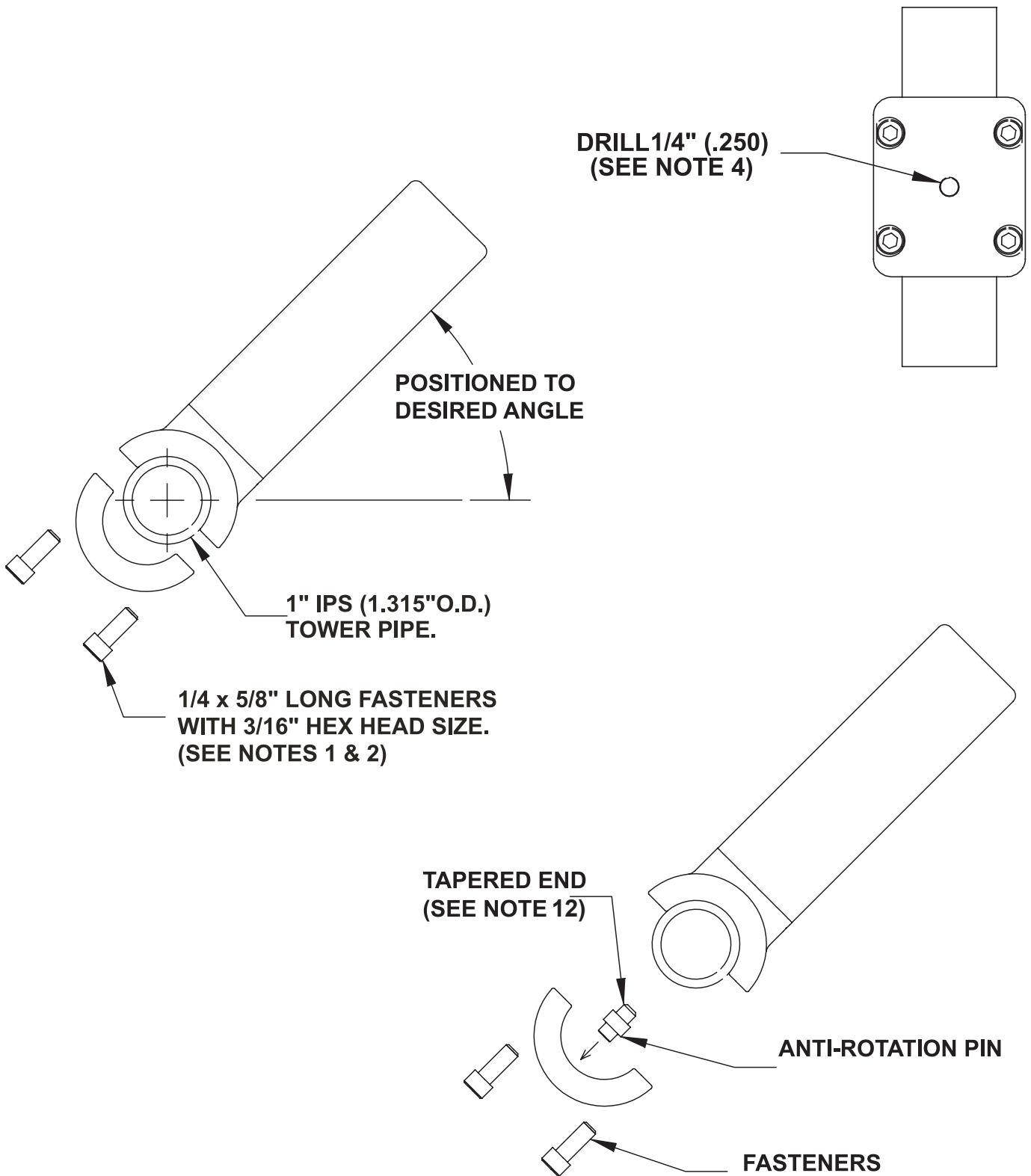
DRILL AND PREPARE THE ROTATION/SET PIN HOLE

6. It is best to “center-punch” the mark prior to drilling the 1/4-inch hole.
 - This will help keep the drill bit from “wandering/moving” when beginning to drill
7. Apply grease to the tip of a 1/4-inch, metal drill bit.
8. After center-punching the marked location, carefully and squarely drill a hole through **only one wall** of the t-top/tower piping.
9. Deburr the drilled hole.
10. Wipe off any excess grease and metal chips from the area and parts.

INSTALL THE CLAMP ON CENTER RIGGER

11. Remove the center rigger pole from the mount prior to installing the mount onto the t-top tube/tower pipe.
12. Position the ANTI-ROTATION PIN, which is fixed into the lower cap, into the drilled hole.
13. Install the upper support tube (see drawing below) down onto the other side of the pipe with the drain hole facing down to the deck.
14. Using a light oil/grease on the threads of the fasteners, install all four and proceed to evenly hand tighten the fasteners. **** Do not over tighten, or the aluminum threads may strip. ****
 - We recommend using a torque wrench set to:
 - 3 foot-pounds (lubricated threads), or
 - 4 foot-pounds (dry threads)
15. Re-check the torque of the fasteners after 24 hours, as the clamps may settle into the t-top tube/tower pipe.

TECHNICAL SPECS



COMPLEMENTARY PRODUCTS

Compliment your Clamp-On Center Rigger with a TACO Center Rigger Pole and Center Rigging Kit. Available in four color combinations, the patented-design poles telescope to less than 6' for bridge clearance, trailering and storage. Additionally, the Center Rigger Kit has everything needed to get you rigged and on the water.

For step-by-step instructions for how to rig poles, visit our popular YouTube channel [youtube.com/tacomarine](https://www.youtube.com/tacomarine) or scan the QR code below.



How to clean

Always use a mild, non-abrasive soap and fresh water. Thoroughly wash the stainless steel with a soft towel or sponge to remove dried salt crystals and other contaminants. Rinse completely with fresh water.

Safe Cleaners

Mild dish washing liquid, specialty marine cleaners:

Sea Safe Boat Wash, Boat Wash Concentrate and Super Suds.

Safe marine lubricants:

CRC Corrosion Inhibitor, Corrosion Block and Get Some Extreme.

Harmful Cleaners

Bleach (Clorox, etc.) and mild abrasive cleaners:

Ajax, Comet, Soft Scrub, Rubbing Compounds, etc.

Strong cleaners:

409, Engine Degreasers, etc.

Acids of any type:

Such as Muriatic, naval jelly or aluminum acid.

We're here to help.

Need Support?

Contact Us



support@tacomarine.com



<https://tacomarine.com/technical-support>



3020 North Commerce Parkway
Miramar, FL. 33025



@tacomarine



@taco_marine

TACO Marine®

TACO[®]

MARINE

INSTRUCT-CENTER RIGGER